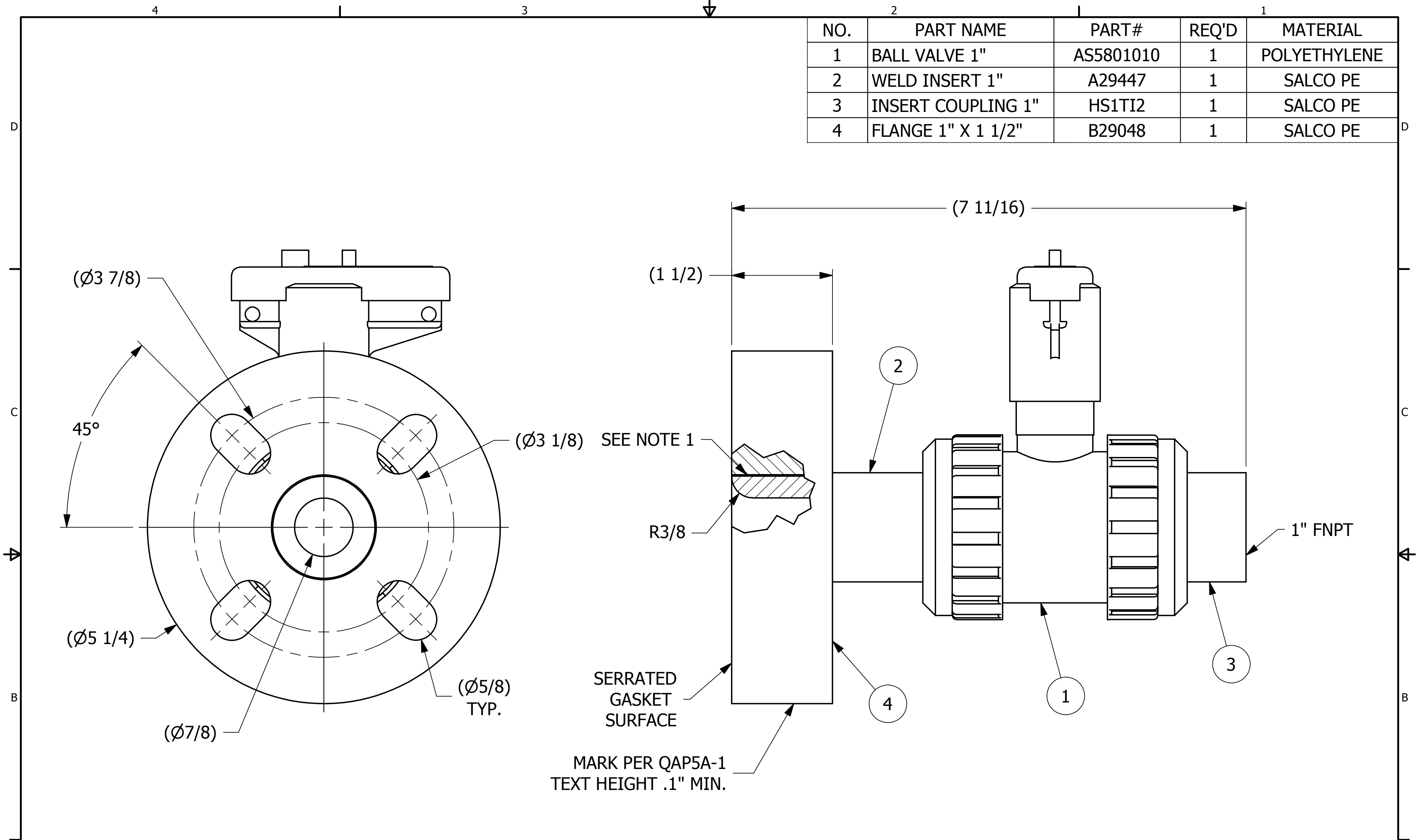


NO.	PART NAME	PART#	REQ'D	MATERIAL
1	BALL VALVE 1"	AS5801010	1	POLYETHYLENE
2	WELD INSERT 1"	A29447	1	SALCO PE
3	INSERT COUPLING 1"	HS1TI2	1	SALCO PE
4	FLANGE 1" X 1 1/2"	B29048	1	SALCO PE



MARK PER QAP5A-1  
TEXT HEIGHT .1" MIN.

- NOTES:  
 1. SEE DOCUMENT DSS 3 FOR FRICTION WELDING SPECIFICATIONS.  
 2. SEE DOCUMENT QAP5A-1 FOR MARKING PROCEDURE.

REV	BY	DATE	DESCRIPTION
B	WEB	4-7-14	ADDED NOTE #1
A	BG	10/25/12	NEW PART ADDED TO THE NETWORK

UNLESS OTHERWISE SPECIFIED DIMENSIONAL TOLERANCES FRACTIONAL: $\pm 1/16$ X.XX: $\pm .03$ X.XXX: $\pm .015$ ANGLE: $\pm 1^\circ$ DEBURR ALL SHARP EDGES. ALL MACHINED SURFACES TO HAVE A 125 RMS FINISH UNLESS NOTED OTHERWISE. THIRD ANGLE PROJECTION	DRAWN BY:	WRB
	CHECKED BY:	VD
	PROTOTYPE BY:	WRB
	PROTOTYPE DATE:	9/16/2010
	APPROVED FOR PRODUCTION BY:	VD
	PRODUCTION DATE:	10/25/2012

**SALCO PRODUCTS, INC.**

PART NAME:  
**AIR VALVE ASSEMBLY 1 1/2", 1" X 1"**

MATERIAL: **SEE BOM**

PROJECT #: **100816** SHEET #: **1 OF 1** SCALE: **1:1**

DRAWING #: **C29450** PART #: **HSAVAPE0604**