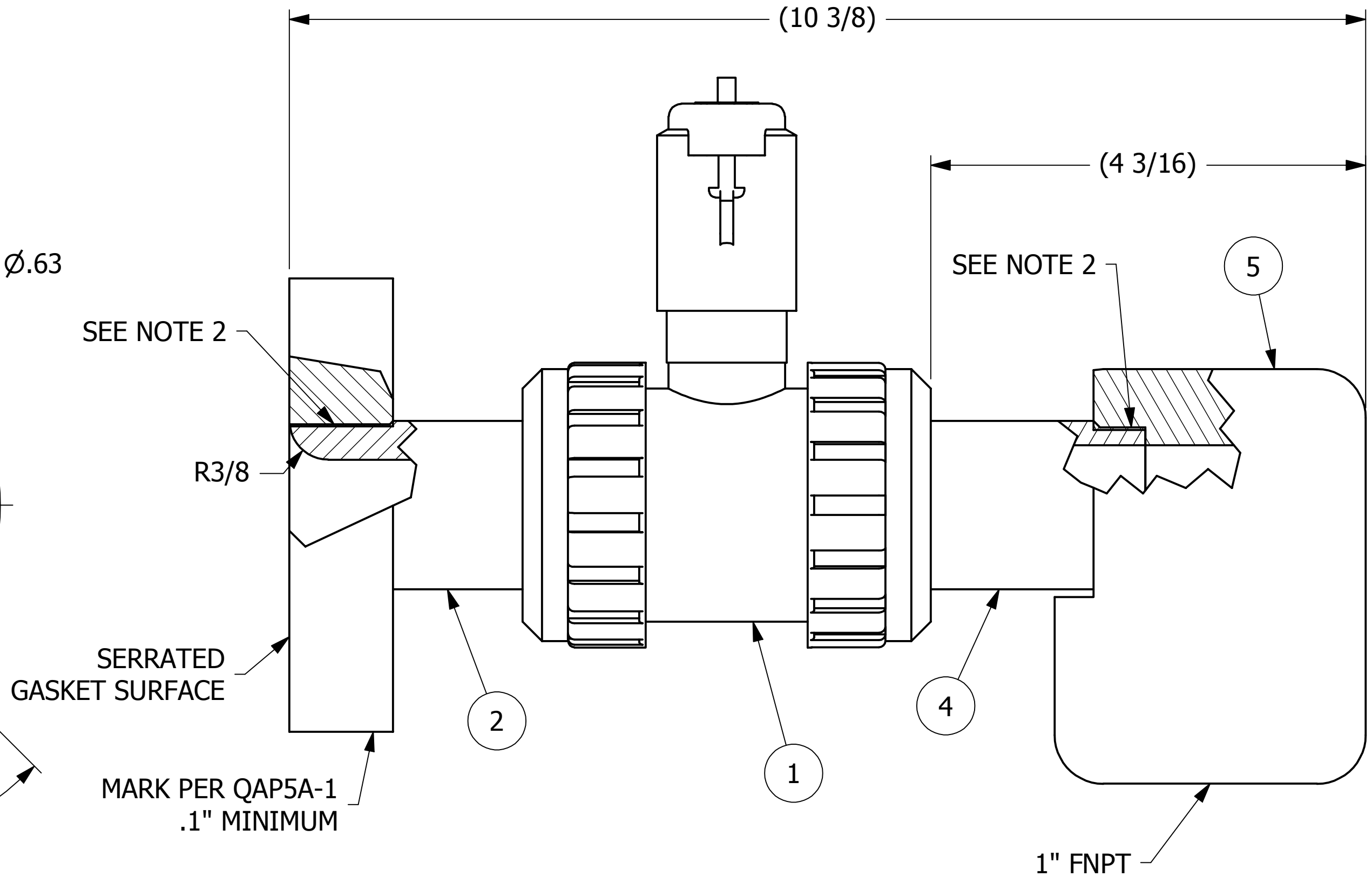
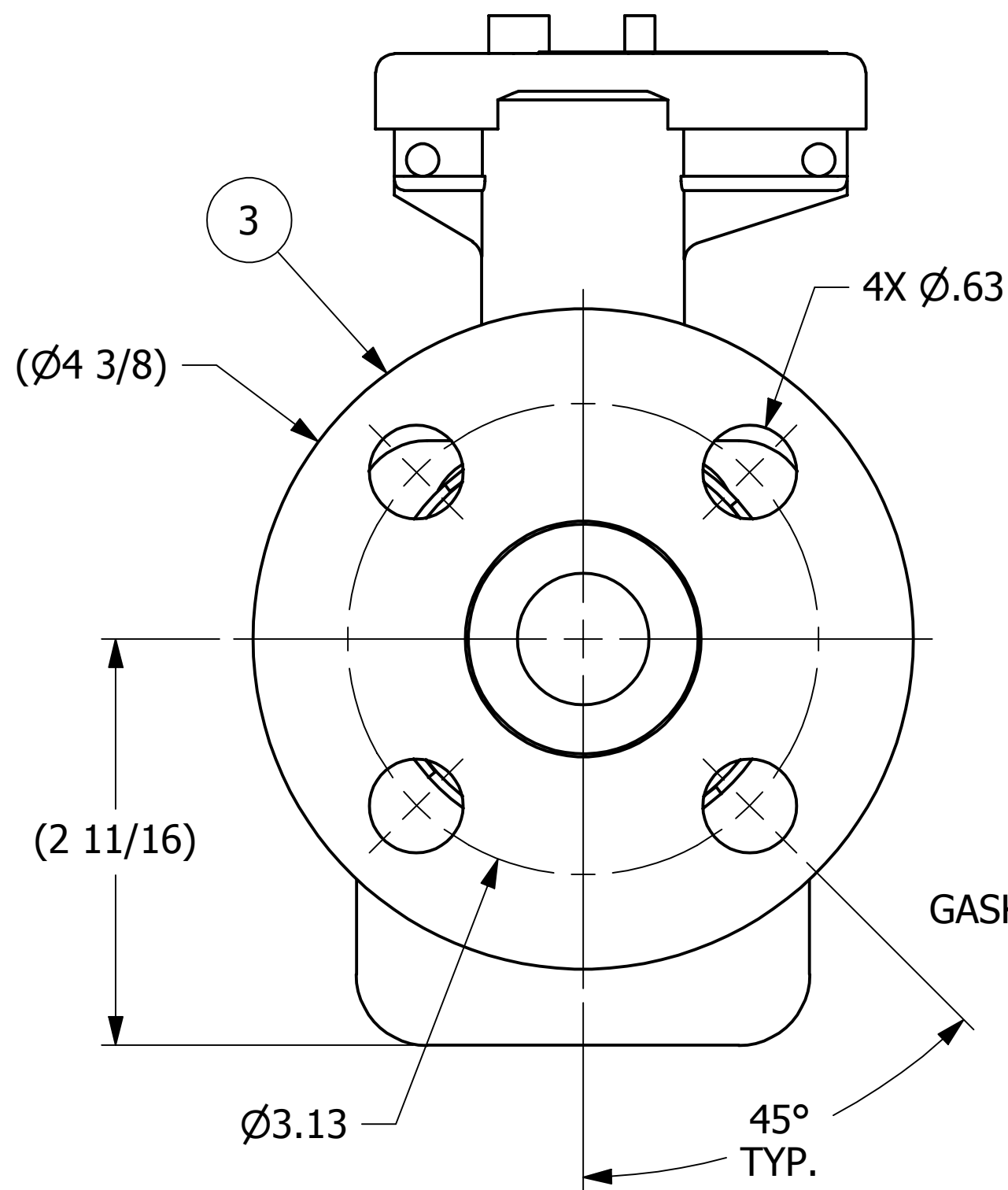


NO.	PART NAME	PART#	REQ'D	MATERIAL
1	BALL VALVE 1"	AS5801010	1	POLYETHYLENE
2	WELD INSERT 1"	A29162	1	SALCO PE
3	FLANGE 1"	HS1FLDGSH	1	SALCO PE
4	PIPE INSERT 1"	A36372	1	SALCO PE
5	AIR VALVE ELBOW BODY 1" X 90"	C36369	1	SALCO PE



- NOTES:
 1. SEE DOCUMENT QAP5A-1 FOR MARKING PROCEDURE.
 2. SEE DOCUMENT DSS 3 FOR FRICTION WELDING SPECIFICATION.

A	GDS	6-4-13	RELEASED FOR PRODUCTION
REV	BY	DATE	DESCRIPTION

UNLESS OTHERWISE SPECIFIED DIMENSIONAL TOLERANCES FRACTIONAL: $\pm 1/16$ X.XX: $\pm .03$ X.XXX: $\pm .015$ ANGLE: $\pm 1^\circ$ DEBURR ALL SHARP EDGES. ALL MACHINED SURFACES TO HAVE A 125 RMS FINISH UNLESS NOTED OTHERWISE. THIRD ANGLE PROJECTION	DRAWN BY:	GDS
	CHECKED BY:	CHL
	PROTOTYPE BY:	GDS
	PROTOTYPE DATE:	5/23/2013
	APPROVED FOR PRODUCTION BY:	GDS
	PRODUCTION DATE:	6/4/2013

SALCO PRODUCTS, INC.		
PART NAME: AIR VALVE ASSEMBLY 1"		
MATERIAL: SEE BOM/ NOTE		
PROJECT #: 1305031	SHEET #: 1 OF 1	SCALE: 1:1
DRAWING #: C36391	PART #: HSAVA36391	