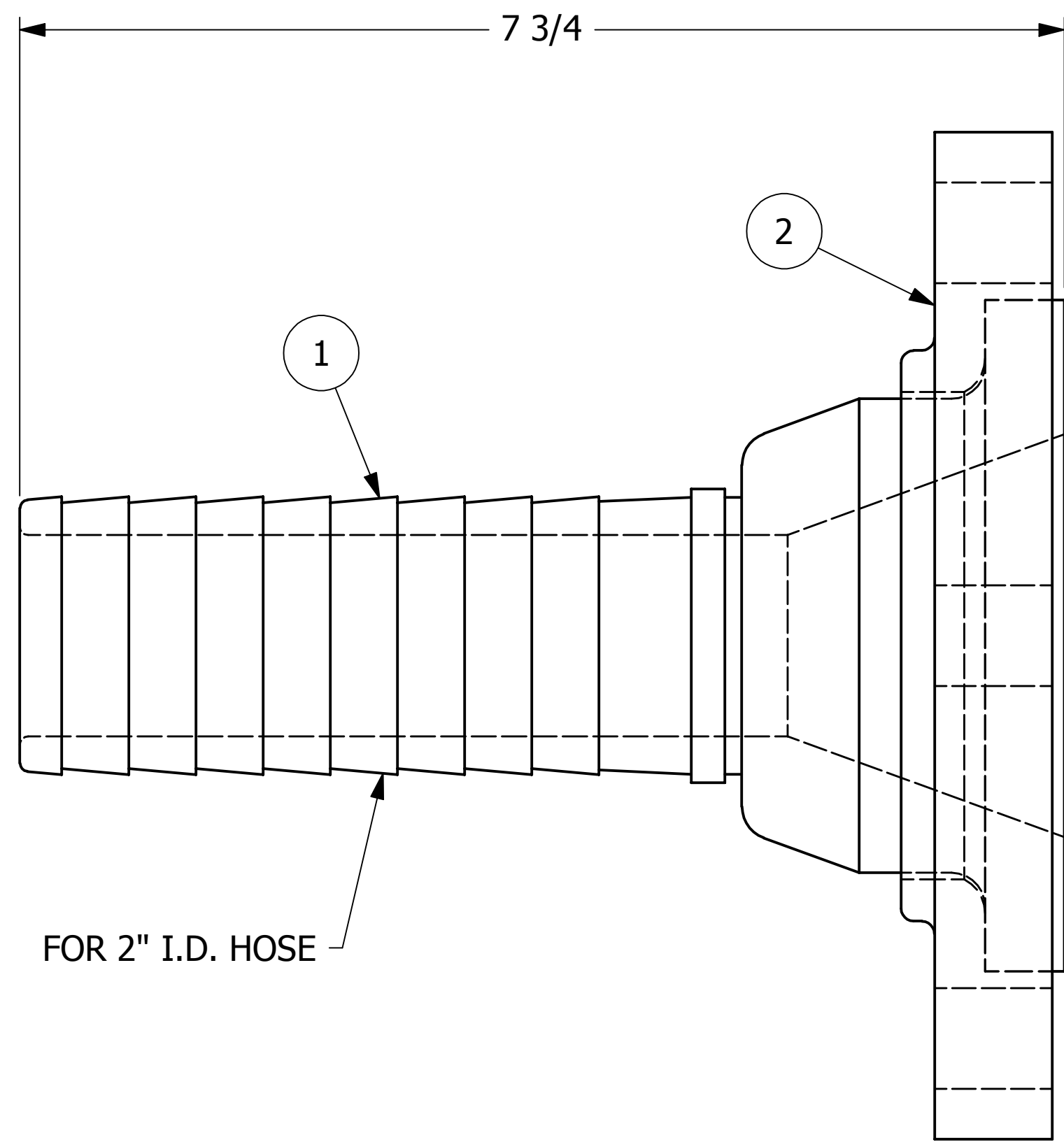
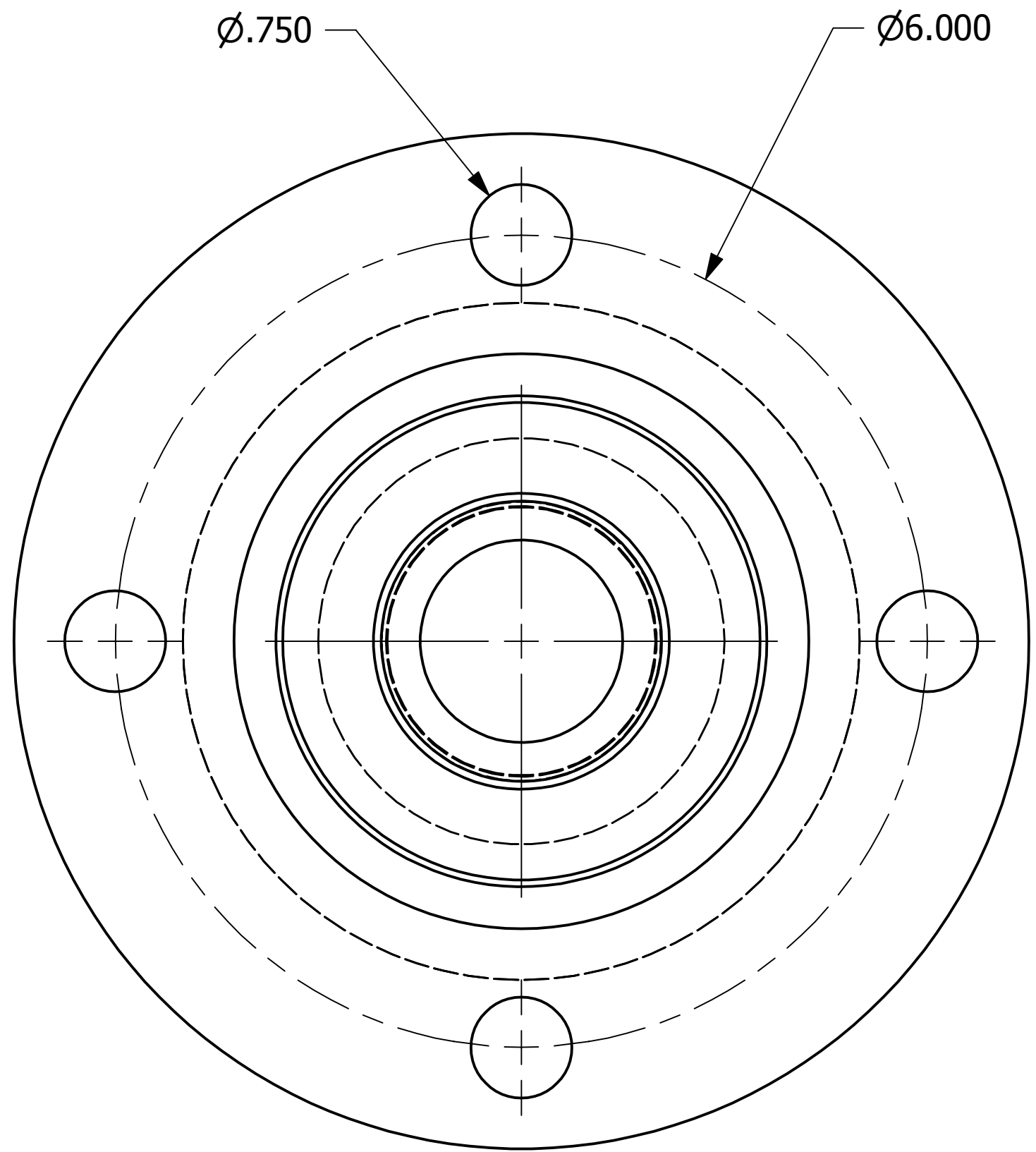


NO.	PART NAME	PART#	REQ'D	MATERIAL
1	HOSE BARB INSERT 2"	HS23HBP	1	SALCO PE
2	INSERT FLANGE 3" 150 LB	HS3FLS4	1	304 SS



FOR 2" I.D. HOSE

REV	BY	DATE	DESCRIPTION
B	ACC	3-2-05	OVERALL LENGTH WAS 8 7/8"
A	ACC	3-31-04	PART NUMBER WAS HS23FTBSS

<small>UNLESS OTHERWISE SPECIFIED DIMENSIONAL TOLERANCES FRACTIONAL: $\pm 1/16$ X.XX: $\pm .03$ X.XXX: $\pm .015$ ANGLE: $\pm 1^\circ$ DEBURR ALL SHARP EDGES. ALL MACHINED SURFACES TO HAVE A 125 RMS FINISH UNLESS NOTED OTHERWISE.</small>	DRAWN BY:	ACC
	CHECKED BY:	VD
	PROTOTYPE BY:	ACC
	PROTOTYPE DATE:	1/5/2011
	APPROVED FOR PRODUCTION BY:	
THIRD ANGLE PROJECTION	PRODUCTION DATE:	

SALCO PRODUCTS, INC.
Hazarsolve® Division

PART NAME:
FLANGED HOSE BARB 3" X 2" 150 LB

MATERIAL: **SEE BOM**

PROJECT #: **030708** SHEET #: **1 OF 1** SCALE: **1:1**

DRAWING #: **C19039** PART #: **HS3X2FTBSS**