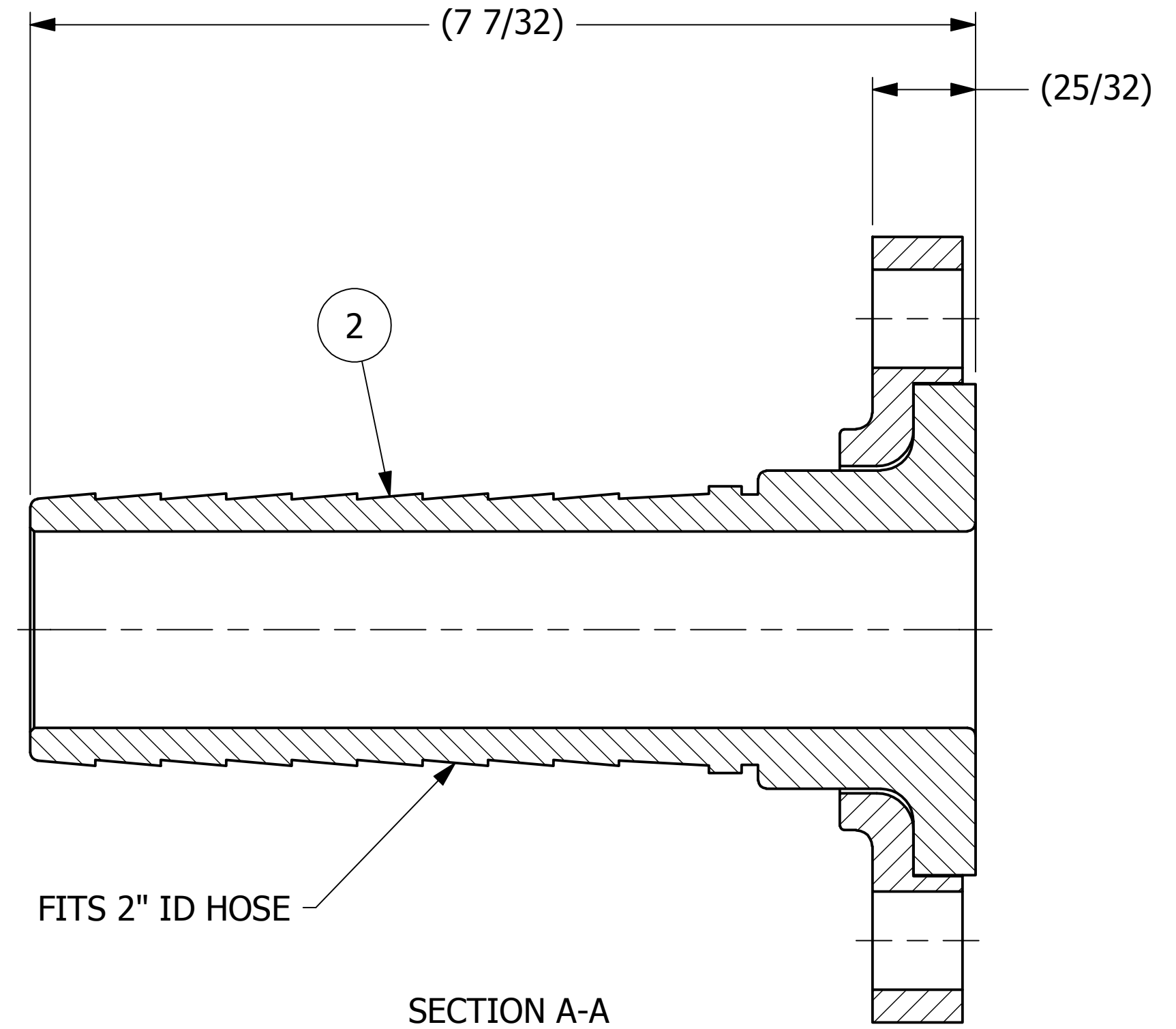
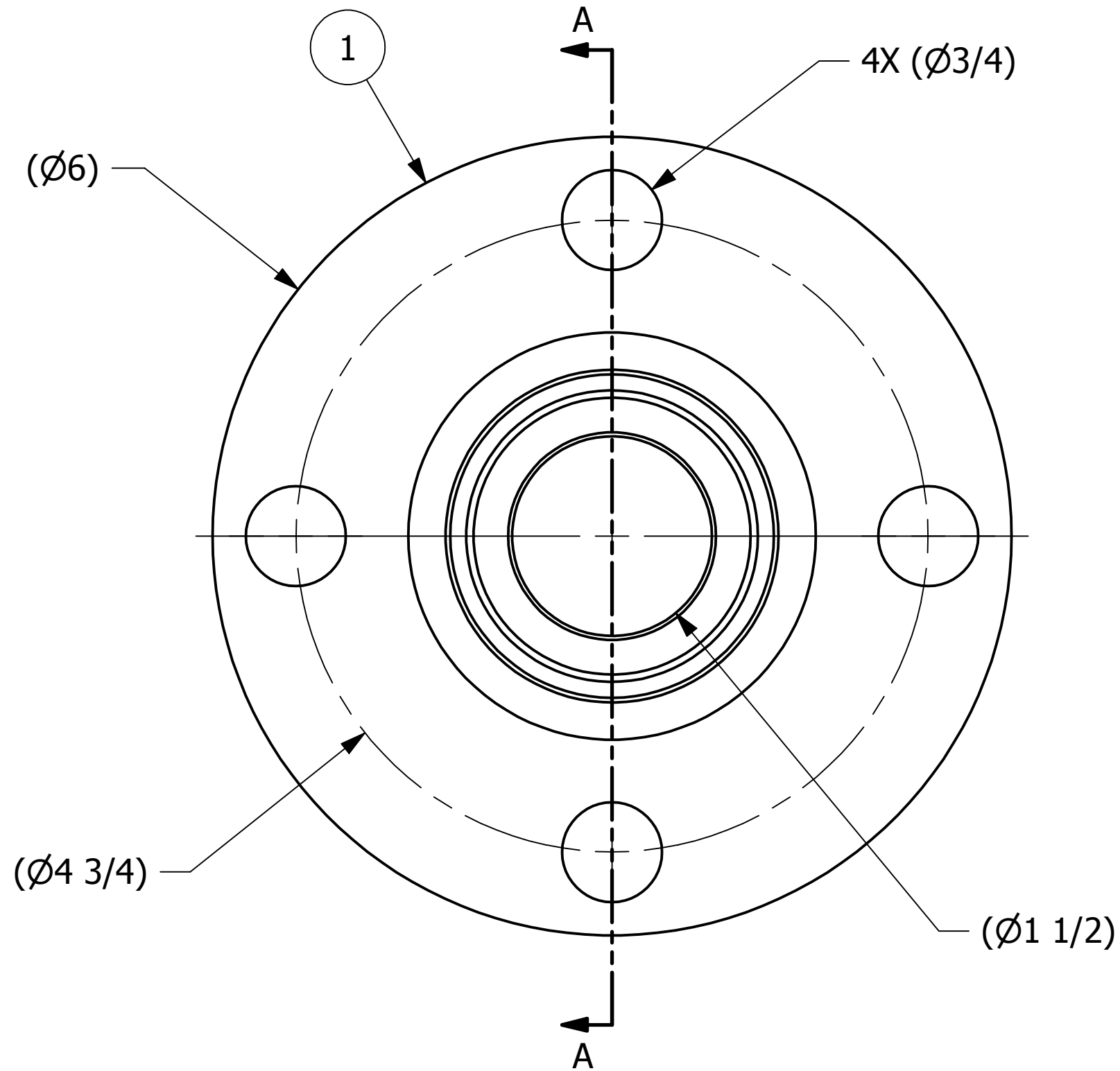


NO.	PART NAME	PART#	REQ'D	MATERIAL
1	FLANGE 2" 150# MODIFIED	HS2FLS4	1	ASTM A182 304 SS
2	HOSE BARB 2"X7 5/16"	HS2HBP	1	SALCO PE



REV	BY	DATE	DESCRIPTION
B	JG	4-17-14	UPDATED TO CURRENT STANDARDS
A	ACC	12-17-03	ADDED PART INTO THE SYSTEM

UNLESS OTHERWISE SPECIFIED DIMENSIONAL TOLERANCES FRACTIONAL: $\pm 1/16$ X.XX: $\pm .03$ X.XXX: $\pm .015$ ANGLE: $\pm 1^\circ$ DEBURR ALL SHARP EDGES. ALL MACHINED SURFACES TO HAVE A 125 RMS FINISH UNLESS NOTED OTHERWISE.	DRAWN BY:	ACC
	CHECKED BY:	CHL
	PROTOTYPE BY:	ACC
	PROTOTYPE DATE:	12/17/2003
	APPROVED FOR PRODUCTION BY:	ACC
	PRODUCTION DATE:	12/17/2003

PART NAME: FLANGED HOSE BARB 2"		
MATERIAL: SEE BOM		
PROJECT #: 030708	SHEET #: 1 OF 1	SCALE: 1:1
DRAWING #: C18571	PART #: HS2FTBSS	