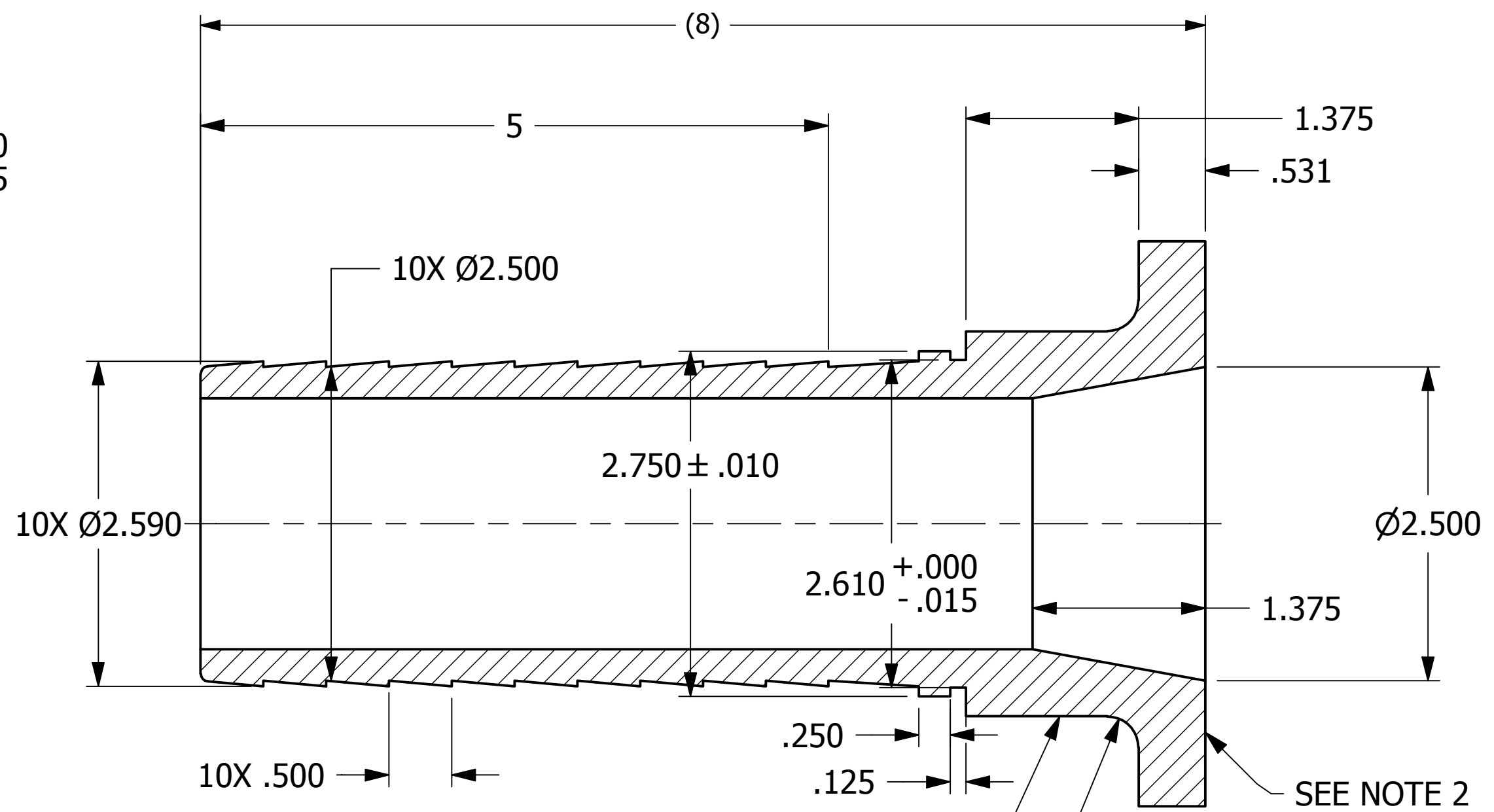
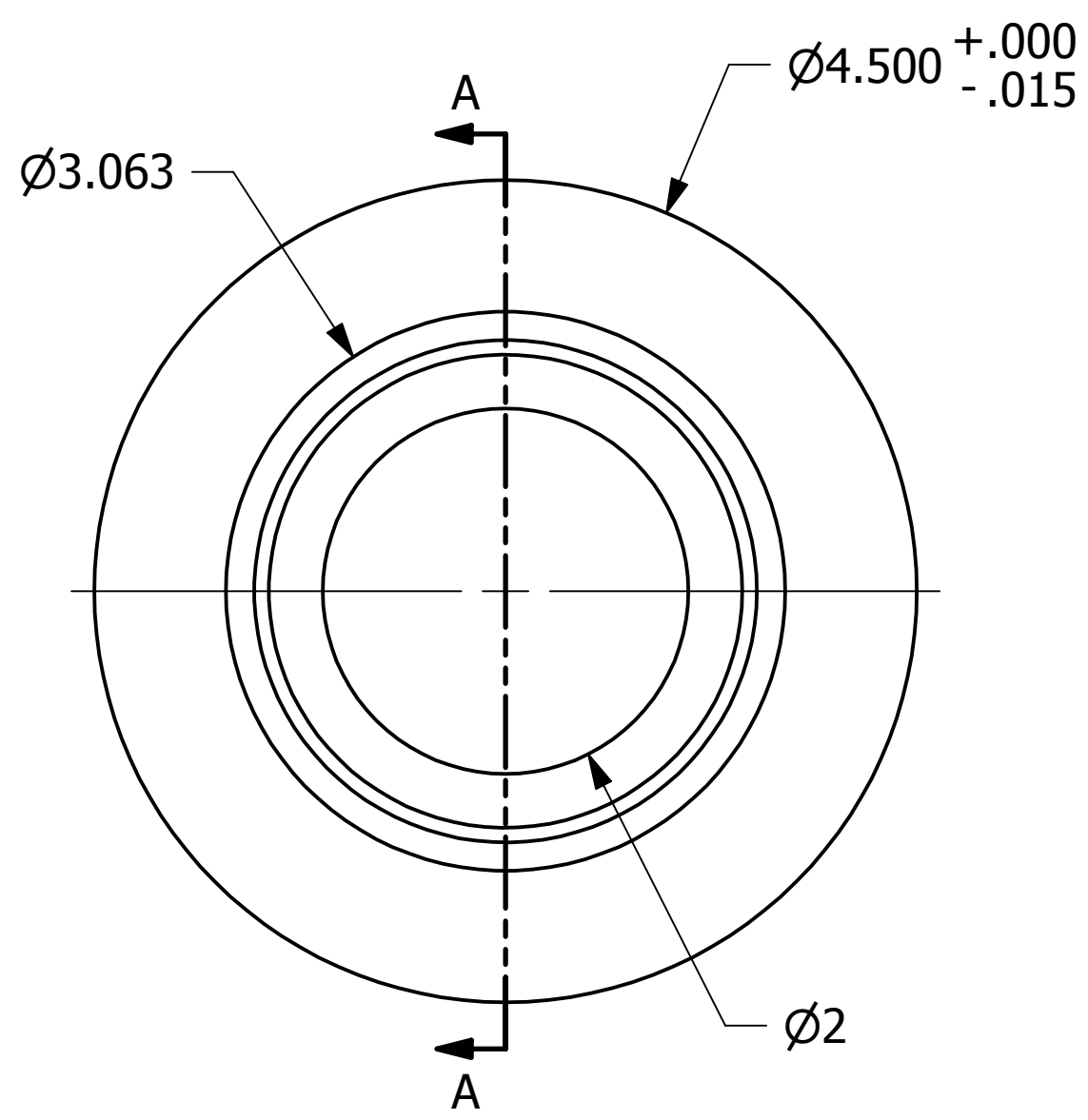


NO.	PART NAME	PART#	REQ'D	MATERIAL
1	ROUND BAR 5"	RNDBAR5UHDB	.68 FT	SALCO PE



SECTION A-A  
 MARK PER Q-2.14  
 TEXT HEIGHT .1" MIN

- NOTES:  
 1. SEE DOCUMENT DSS 1 FOR MATERIAL SPECIFICATIONS.  
 2. SEE DOCUMENT DSS 5 FOR SERRATED GASKET SURFACE.  
 3. SEE DOCUMENT Q-2.14 FOR MARKING PROCEDURE.  
 4. ALL RADII TO BE 1/16" UNLESS NOTED OTHERWISE.

REV	BY	DATE	DESCRIPTION
B	WEB	4-13-18	UPDATED TITLEBLOCK, ADDED NOTES 2,3,&4
A	CHL	4-18-11	ADDED DRAWING TO NETWORK

<small>UNLESS OTHERWISE SPECIFIED DIMENSIONAL TOLERANCES FRACTIONAL: ±1/16            X.XX: ±.03            X.XXX: ±.015            ANGLE: ±1°            DEBURR ALL SHARP EDGES. ALL MACHINED SURFACES TO HAVE A 125 RMS FINISH UNLESS NOTED OTHERWISE.</small>	DRAWN BY:	CHL
	CHECKED BY:	PJG
	PROTOTYPE BY:	CHL
	PROTOTYPE DATE:	3/24/2011
	APPROVED FOR PRODUCTION BY:	PJG
	PRODUCTION DATE:	4/18/2011

**SALCO PRODUCTS, INC.**

PART NAME: **HOSE BARB INSERT 2 1/2"**

MATERIAL: **SEE BOM**

PROJECT #: **110111** SHEET #: **1 OF 1** SCALE: **1:1**

DRAWING #: **C30477** PART #: **HS25HBP**