

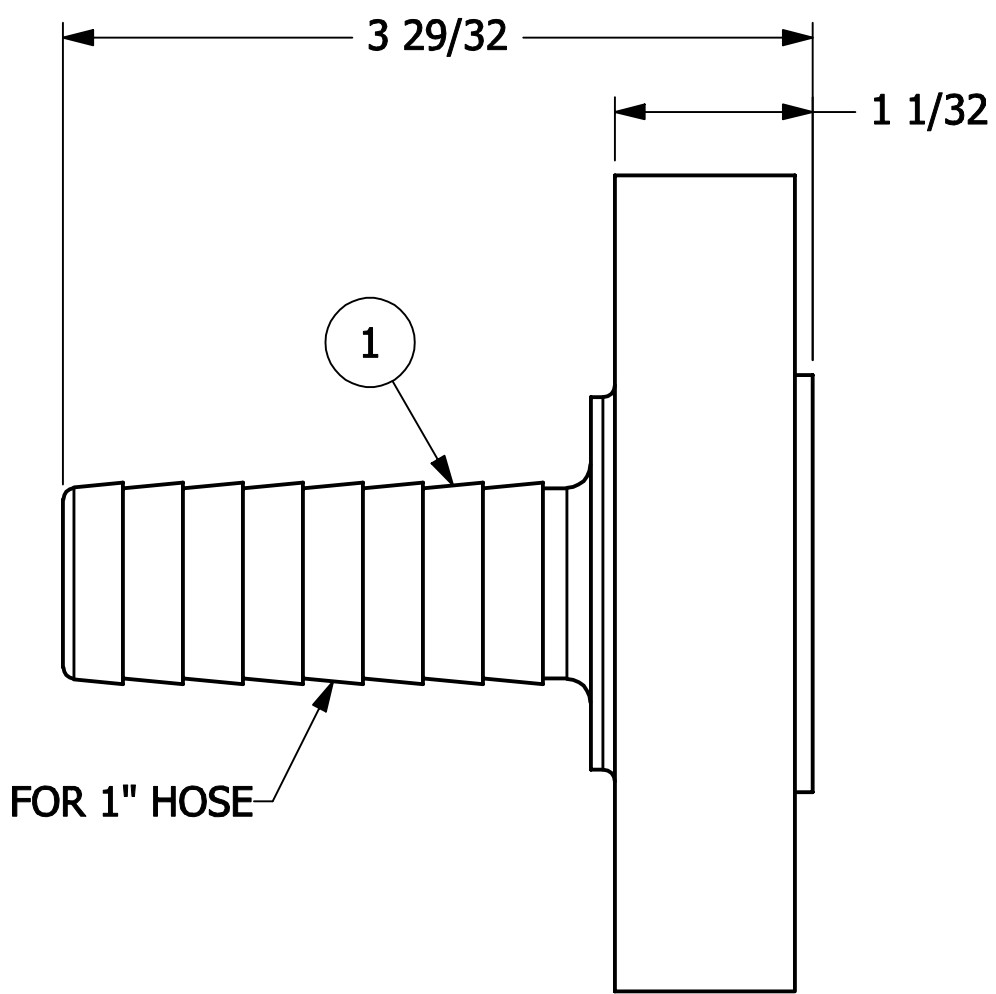
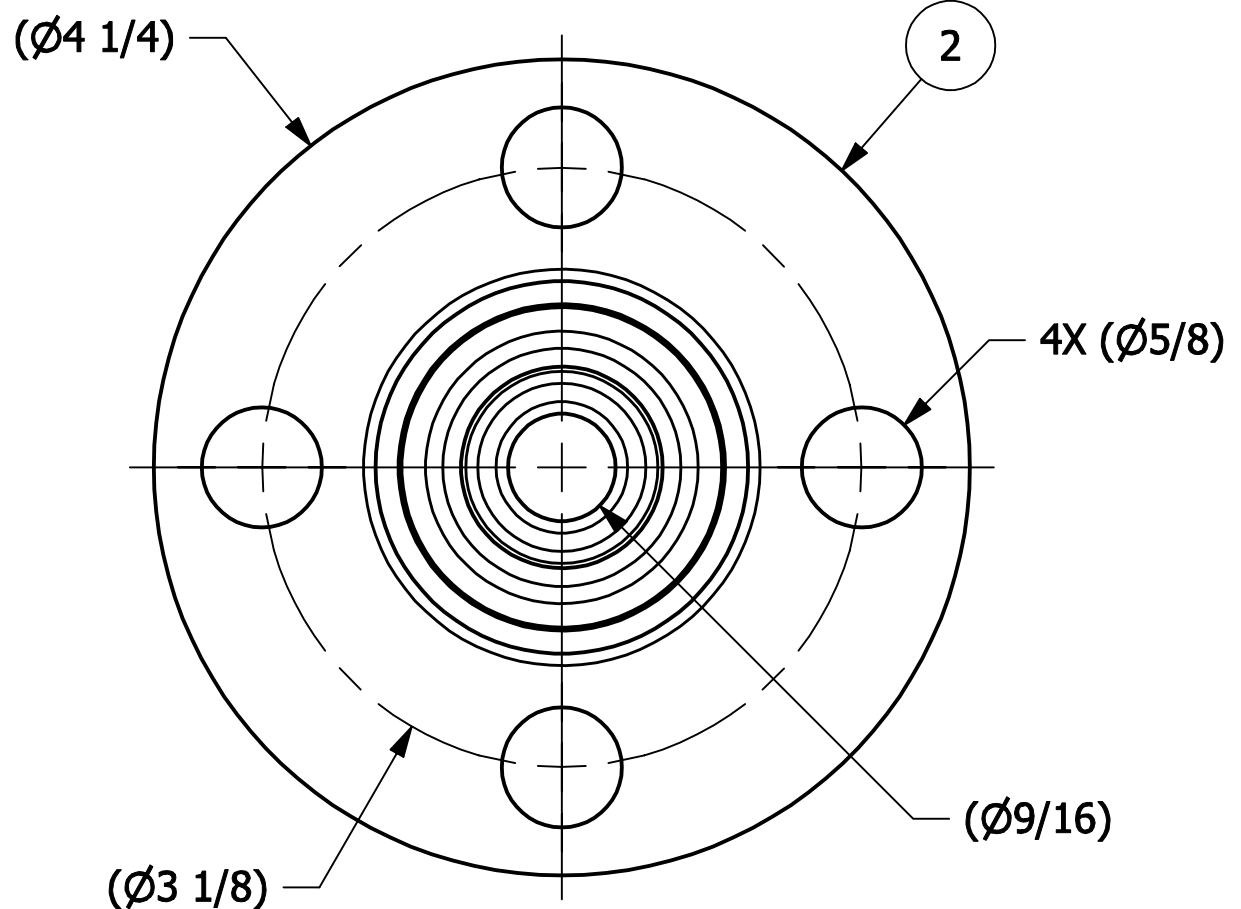
NO.	PART NAME	PART #	REQ'D	MATERIAL
1	HOSE BARB INSERT 1"	HS1HBP	1	SALCO PE
2	INSERT FLANGE 1" 150 LB	HS1FLP	1	SALCO PE

B

A

A

B



A	CHL	12-4-08	NEW PART ADDED TO SYSTEM
REV	BY	DATE	DESCRIPTION

UNLESS OTHERWISE SPECIFIED DIMENSIONAL TOLERANCES	DRAWN BY:	CHL
FRACTIONAL: $\pm 1/16$	CHECKED BY:	PJG
X.XX: $\pm .03$	PROTOTYPE BY:	CHL
X.XXX: $\pm .015$	PROTOTYPE DATE:	10/31/2008
ANGULAR: $\pm 1^\circ$	APPROVED FOR PRODUCTION BY:	PJG
THIS PRINT, PROPERTY OF SALCO PRODUCTS INC., CONTAINS PROPRIETARY INFORMATION AND MUST NOT BE COPIED, REPRODUCED, OR USED DETRIMENTALLY TO OUR INTEREST.	PRODUCTION DATE:	12/4/2008
THIRD ANGLE PROJECTION		

**Hazarsolve Corp**  
A DIVISION OF SALCO PRODUCTS

PART NAME:  
**FLANGED HOSE BARB 1" 150 LB**

MATERIAL: **SEE BOM**

PROJECT #: **WAG0624**      SHEET #: **1 OF 1**      SCALE: **1:1**

DRAWING #: **B21295**      PART #: **HS1FTBPY**

4

1

3

4

2

1

1