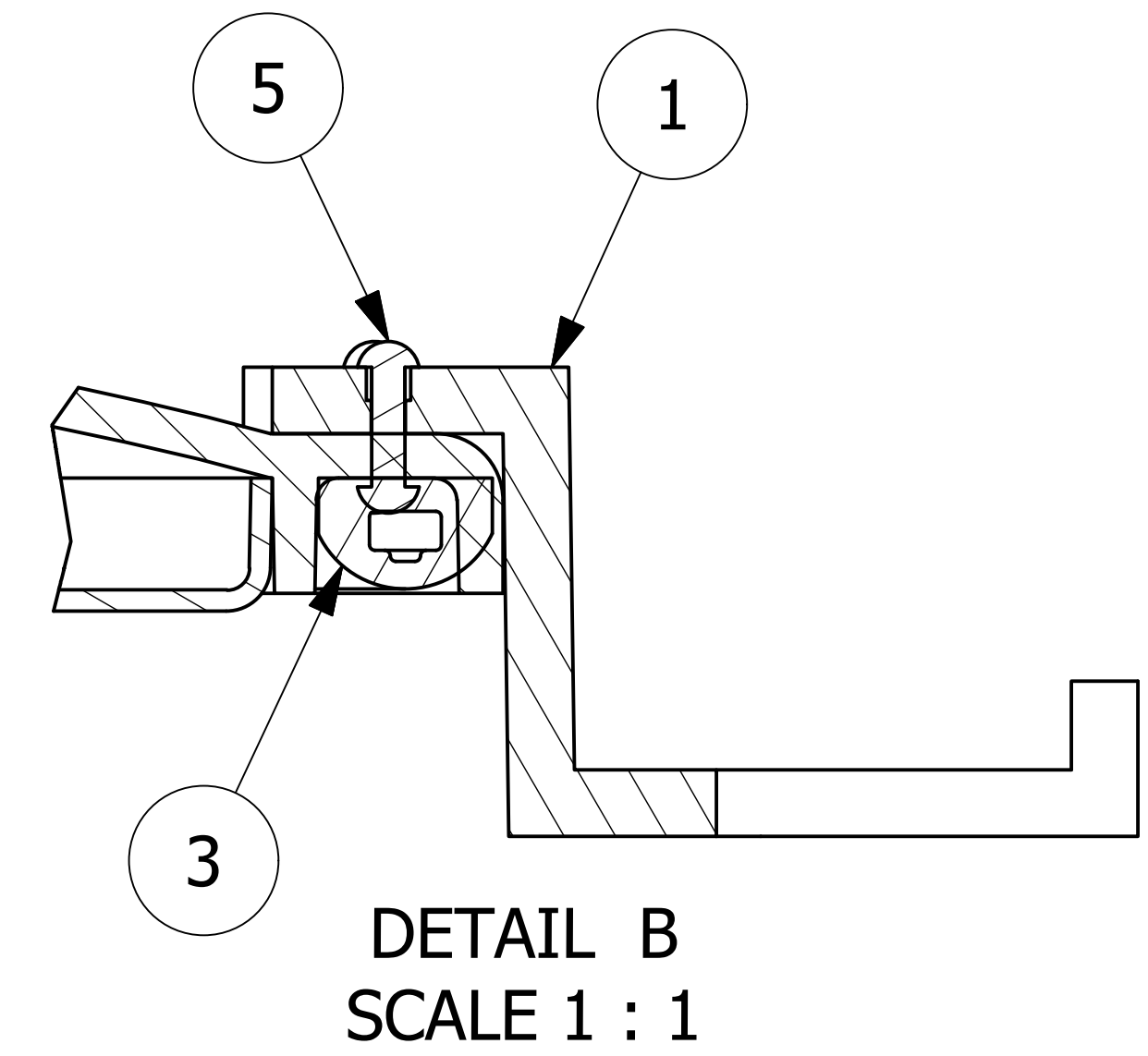


NO.	PART NAME	PART#	REQ'D	MATERIAL
1	VALVE COVER LATCH	C17095	3	ALUMINUM
2	COVER INSERT	CB16CL	1	ABS
3	HATCH COVER GASKET 16"	HCG16EFNB	1	FOAM NEOPRENE
4	HATCH COVER 16"	PHC16A	1	ABS
5	BLIND RIVET 3/16"	R316SS	9	18-8 SS



- NOTE:
1. DRILL HOLES AS INDICATED IN COVER FIRST.
 2. RIVET LATCHES TO COVER WITH END OF RIVET IN GASKET GROOVE.
 3. GLUE GASKET (HCG16EFNB) INTO THE GASKET GROOVE ON THE COVER (PHC16A).
 4. GLUE COVER INSERT (CB16CL) INTO THE CENTER OF THE COVER (PHC16A).
 5. AFTER GASKET AND COVER INSERT ARE GLUED INTO THE COVER IT REQUIRES A 24 HOUR CURE TIME.

REV	BY	DATE	DESCRIPTION
D	WEB	9/21/20	UPDATED RIVET AND GLUE NOTES; UPDATED TITLE BLOCK
C	WEB	5/5/15	ADDED CB16CL, UPDATED TITLEBLOCK, UPDATED NOTE 3
B	WRB	5/4/07	UPDATED DWG AND REPLACED HCG16THCB W/ HCG16EFNB
A	CHL	10/31/03	NEW PART ADDED TO SYSTEM

UNLESS OTHERWISE SPECIFIED DIMENSIONAL TOLERANCES	DRAWN BY:	CHL
FRACTIONAL: ±1/16	CHECKED BY:	KRSJ
X.XX: ±.03	PROTOTYPE DATE:	8/15/2002
X.XXX: ±.015	APPROVED FOR PRODUCTION BY:	KRSJ
ANGULAR: ±1°	PRODUCTION DATE:	10/31/2003
DEBURR ALL SHARP EDGES. ALL MACHINED SURFACES TO HAVE A 125 RMS FINISH UNLESS NOTED OTHERWISE.	SIZE:	D
THIRD ANGLE PROJECTION	DRAWING #:	17208

SALCO PRODUCTS, INC.

PART NAME: **VALVE COVER 16"**

MATERIAL: **SEE BOM**

PROJECT #: **981023** SHEET #: **1 OF 1** SCALE: **1 / 2**

PART #: **PHC16CBVA**