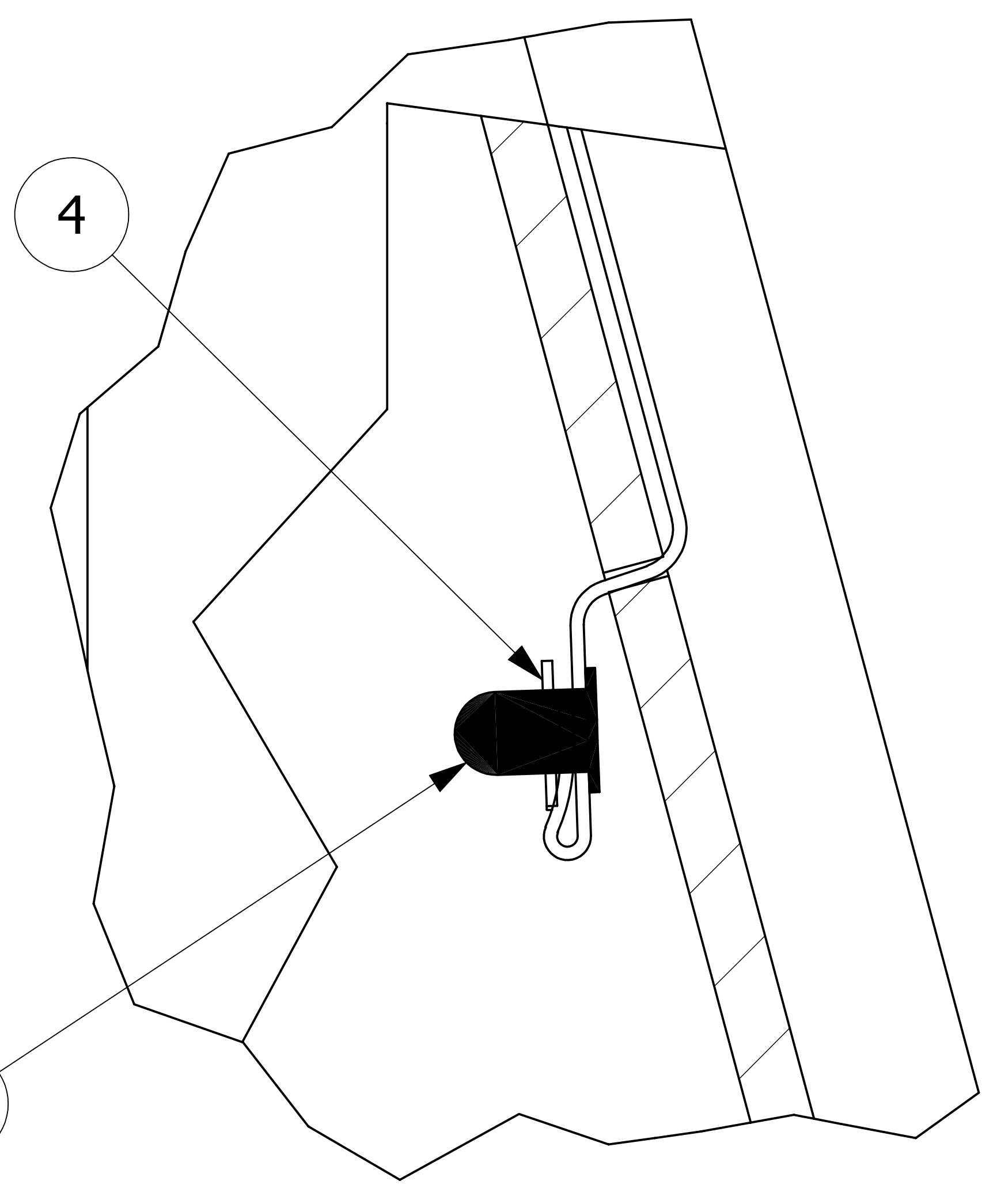
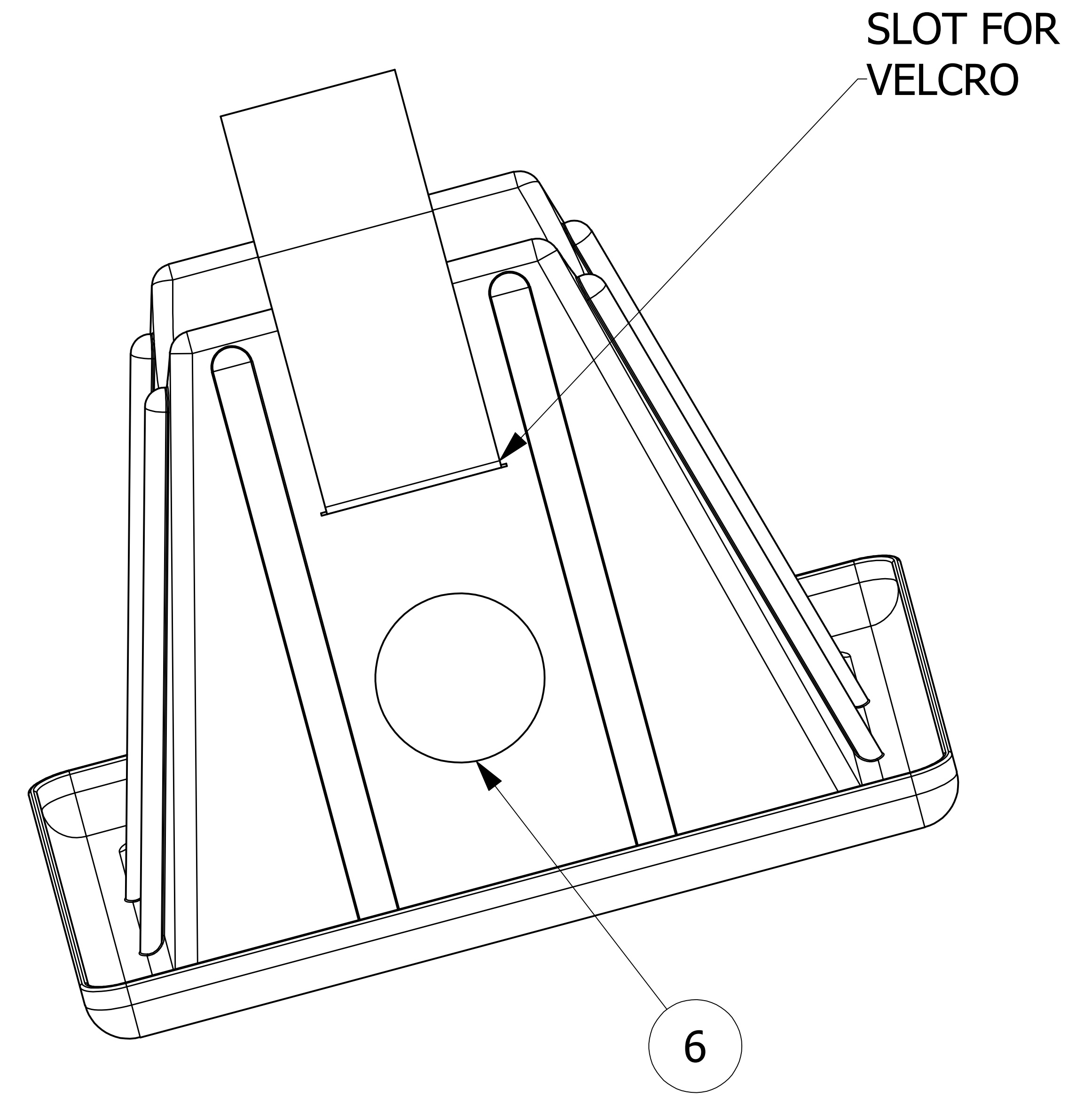
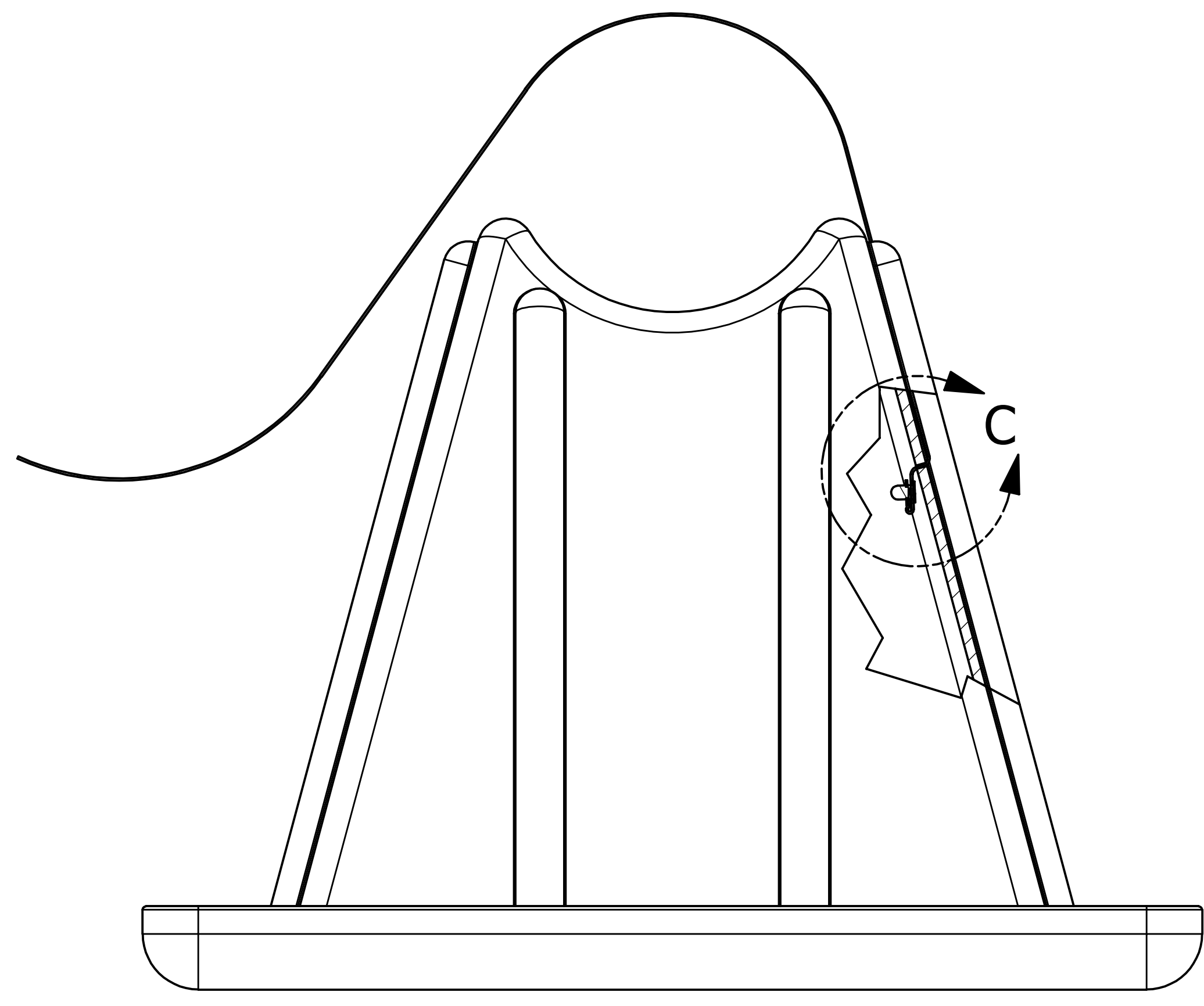
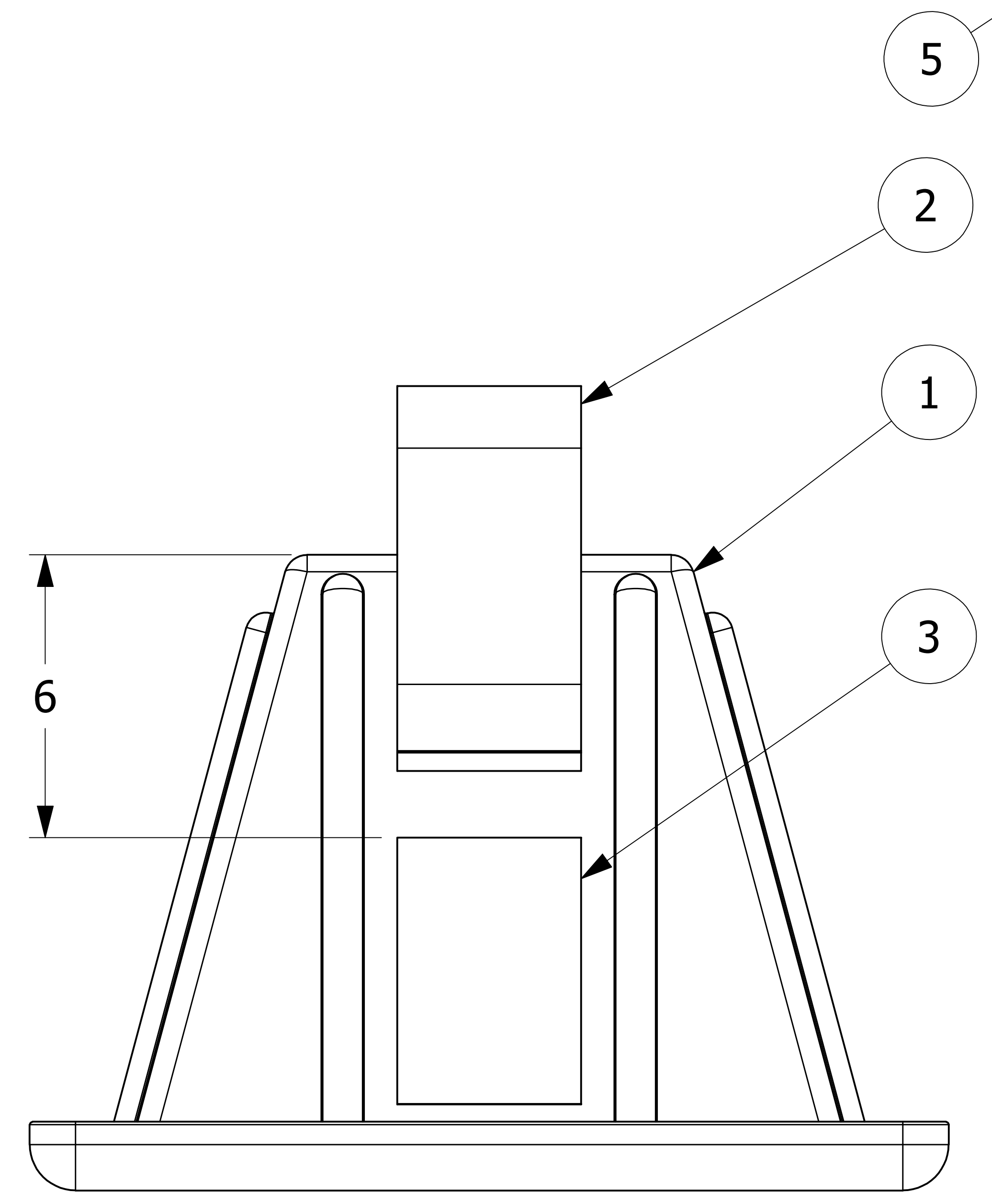


NO.	PART NAME	PART#	REQ'D	MATERIAL
1	UNLOADING HOSE SUPPORT	HOSE345	1	BLACK ABS
2	VELCRO LOOP 4"	V190799	36"	VELCRO
3	VELCRO HOOK 4"	V197177	6"	VELCRO
4	FLAT WASHER 3/16"	WASH316	3	18-8 SS
5	BLIND RIVET 3/16"	R316	3	ALUMINUM
6	HOSE SUPPORT LABEL	LABEL4.5	1	VINYL



DETAIL C



REV	BY	DATE	DESCRIPTION
F	WEB	10-3-16	UPDATED TITLEBLOCK, ADDED 2X R316
E	REH	8-24-10	REMOVED SLOT DIMENSIONS, UPDATED BOM
D	AJB	5-2-08	UPDATED DIMS. DRAWING SIZE WAS C.
C	CHL	5-27-08	UPDATED MATERIAL OF WASH316 FROM ALUMINUM.
B	FOD	2-18-98	CHANGED DESCRIPTION OF QTY TO INCHES.
A	MRC	5-10-97	CHANGED 24" VELCRO STRAP TO 36".. RIVETS AND WASHERS ADDED

UNLESS OTHERWISE SPECIFIED DIMENSIONAL TOLERANCES FRACTIONAL: $\pm 1/16$ X.XX: $\pm .03$ X.XXX: $\pm .015$ ANGULAR: $\pm 1^\circ$ DEBURR ALL SHARP EDGES. ALL MACHINED SURFACES TO HAVE A 125 RMS FINISH UNLESS NOTED OTHERWISE. THIRD ANGLE PROJECTION	DRAWN BY:	ACC
	CHECKED BY:	PJG
	PROTOTYPE BY:	ACC
	PROTOTYPE DATE:	5/2/2008
	APPROVED FOR PRODUCTION BY:	ACC
	PRODUCTION DATE:	11/6/1996

SALCO PRODUCTS, INC.

HOSE SUPPORT ASSEMBLY

MATERIAL: **SEE BOM**

PROJECT #: **080502** SHEET #: **1 OF 1** SCALE: **1:2**

DRAWING #: **E8452** PART #: **HS345**