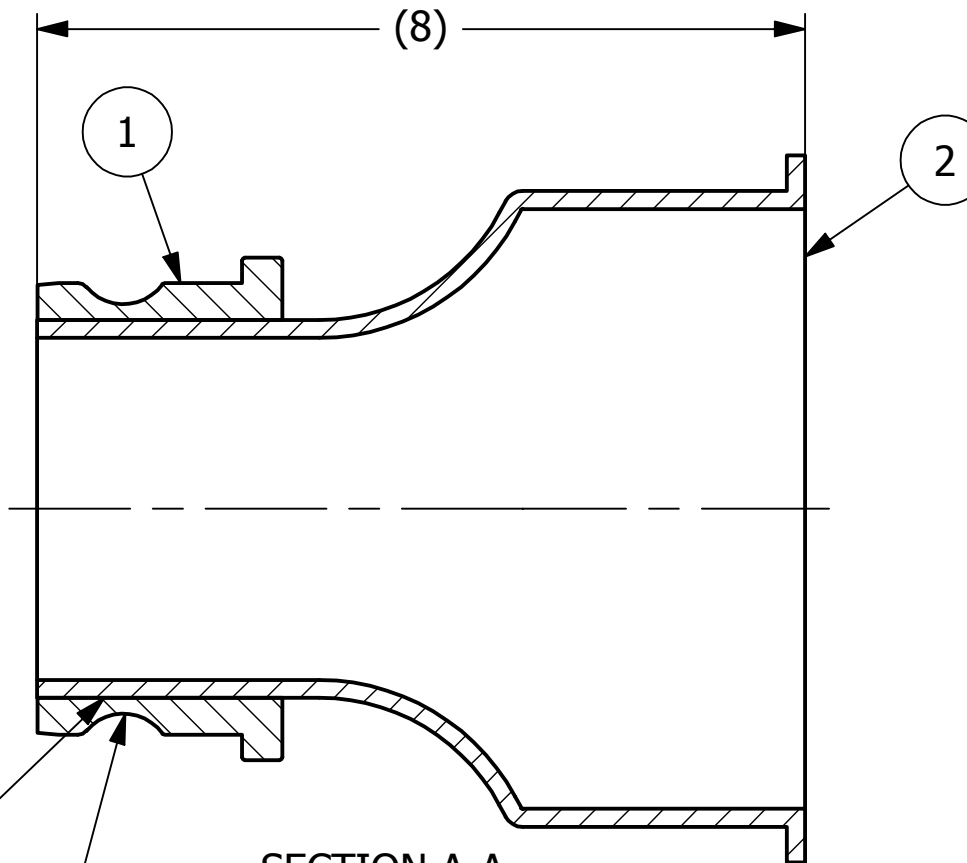
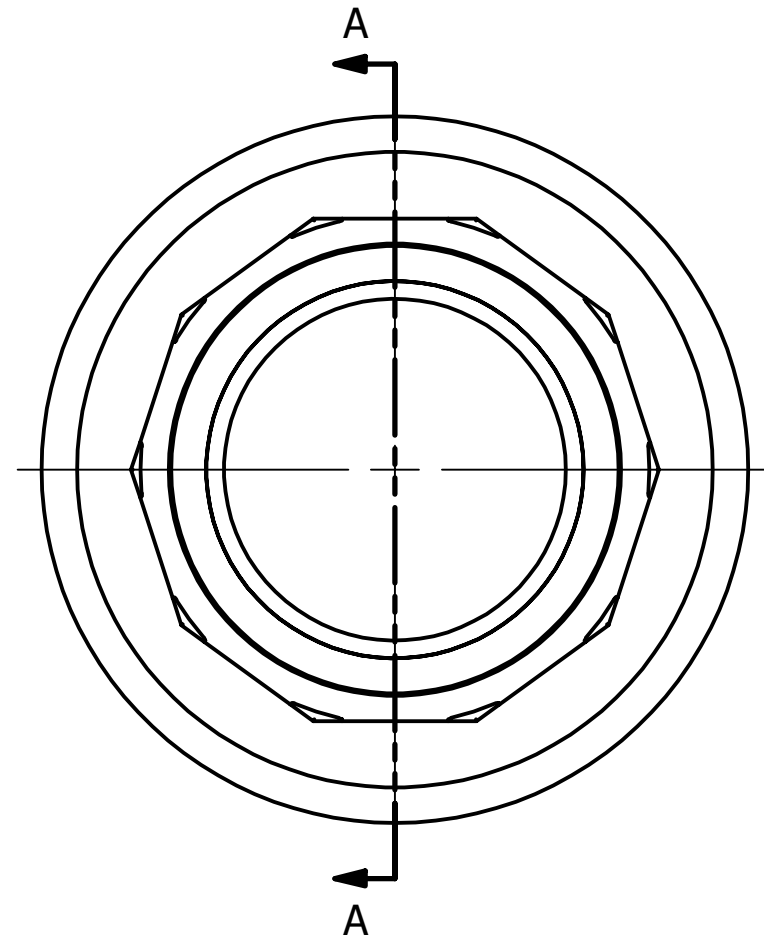


NO	PART NAME	PART#	REQ'D	MATERIAL
1	4" LOADING ADAPTER	UN4HA	1	NYLON
2	ADAPTER 6" X 4"	UN6/4	1	PVC



MACHINE I.D. OF UN4HA  
TO MATCH O.D. UN6/4

4" CAM  
GROOVE

SECTION A-A

REV	BY	DATE	DESCRIPTION
B	WEB	11-17-17	UPDATED TO CURRENT DRAFTING STANDARDS, ADDED NOTES
A	MRC	5-21-97	PART REDESIGN

UNLESS OTHERWISE SPECIFIED DIMENSIONAL TOLERANCES		DRAWN BY:	BRW
FRACTIONAL:	±1/16	CHECKED BY:	
X.XX:	±.03	PROTOTYPE BY:	BRW
X.XXX:	±.015	PROTOTYPE DATE:	9/6/1994
ANGULAR:	±1°	APPROVED FOR PRODUCTION BY:	BRW
DEBURR ALL SHARP EDGES. ALL MACHINED SURFACES TO HAVE A 125 RMS FINISH UNLESS NOTED OTHERWISE.		PRODUCTION DATE:	9/6/1994
THIRD ANGLE PROJECTION			

**SALCO PRODUCTS, INC.**

PART NAME:  
**UNLOADING ADAPTER 6" X 4"**

MATERIAL: **SEE BOM**

PROJECT #: \_\_\_\_\_ SHEET #: **1 OF 1** SCALE: **1:2**

DRAWING #: **B7085** PART #: **UN64A**

- NOTES
- PREP MATING SURFACES WITH PRIMER.
  - GLUE WITH EC25S.