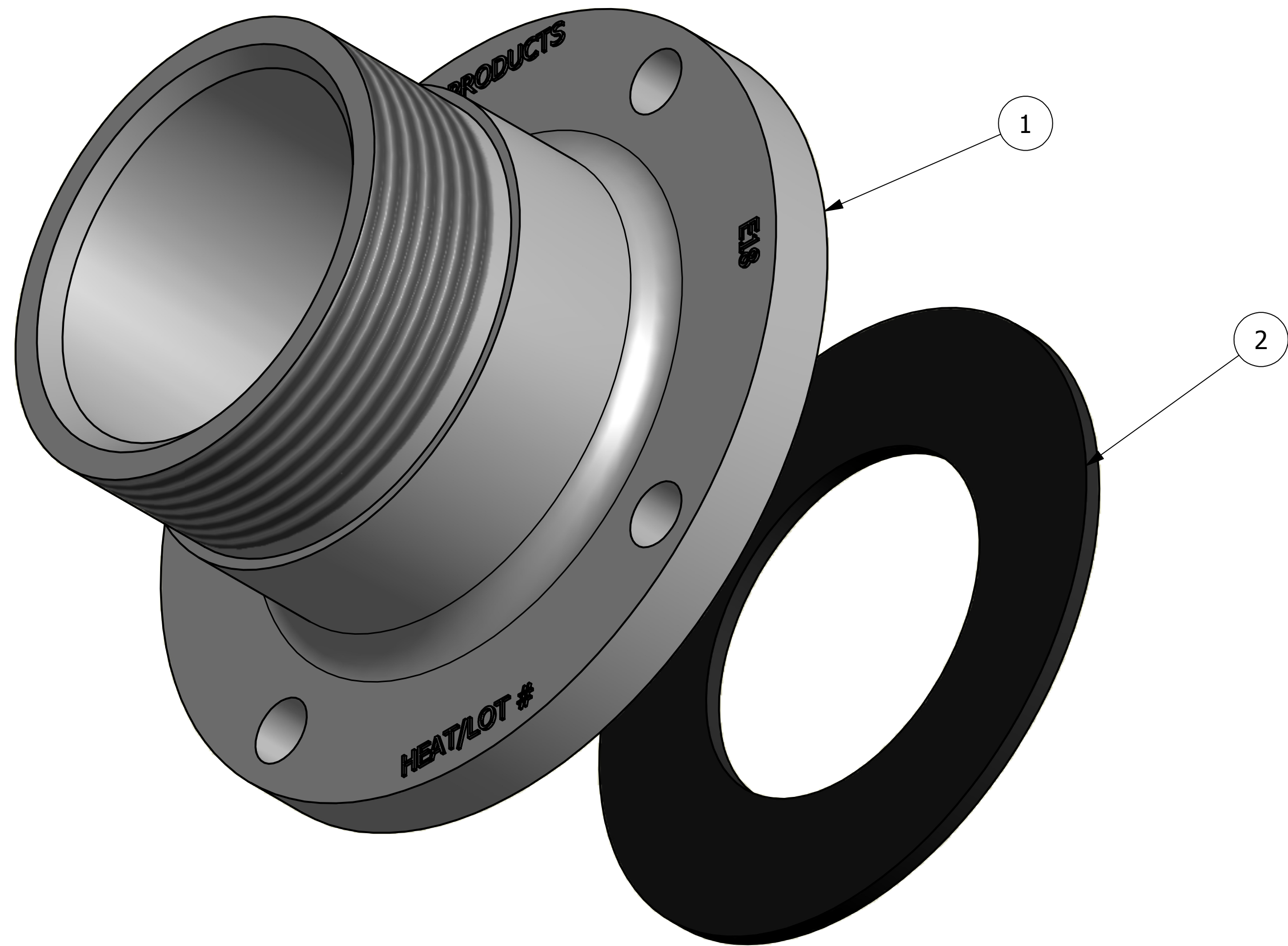


| NO. | PART NAME | PART# | REQ'D | MATERIAL |
|-----|-------------------------|-----------|-------|---------------|
| 1 | BOTTOM OUTLET NOZZLE 4" | TC4DLUTSS | 1 | 316 SS |
| 2 | FLANGE GASKET 4" | FG7751 | 1 | BLACK NITRILE |



NOTES:
 1. THREADS CONFORM TO FIGURE E18.1 IN TANK CAR MANUAL.
 2. FITS 4" UNION TANK BALL VALVE (7.75" B.C.)

| | | |
|--|-----------------------------|------------|
| UNLESS OTHERWISE SPECIFIED DIMENSIONAL TOLERANCES | DRAWN BY: | ACC |
| FRACTIONAL: $\pm 1/16$ | CHECKED BY: | |
| X.XX: $\pm .03$ | PROTOTYPE BY: | ACC |
| X.XXX: $\pm .015$ | PROTOTYPE DATE: | 11/30/2000 |
| ANGLE: $\pm 1^\circ$ | APPROVED FOR PRODUCTION BY: | ACC |
| THIRD ANGLE PROJECTION | PRODUCTION DATE: | 11/30/2000 |

| | | | |
|--|-----|----------------------------|--------------------------|
| A | TAJ | 4/28/11 | UPDATED PART TO INVENTOR |
| REV | BY | DATE | DESCRIPTION |
| SALCO PRODUCTS, INC. | | | |
| PART NAME: BOTTOM OUTLET ASSEMBLY 4" | | | |
| MATERIAL: SEE BOM | | | |
| PROJECT #: 980224 | | SHEET #: 1 OF 1 | SCALE: 1:1 |
| DRAWING #: C15217 | | PART #: TC4DLUTSS1A | |