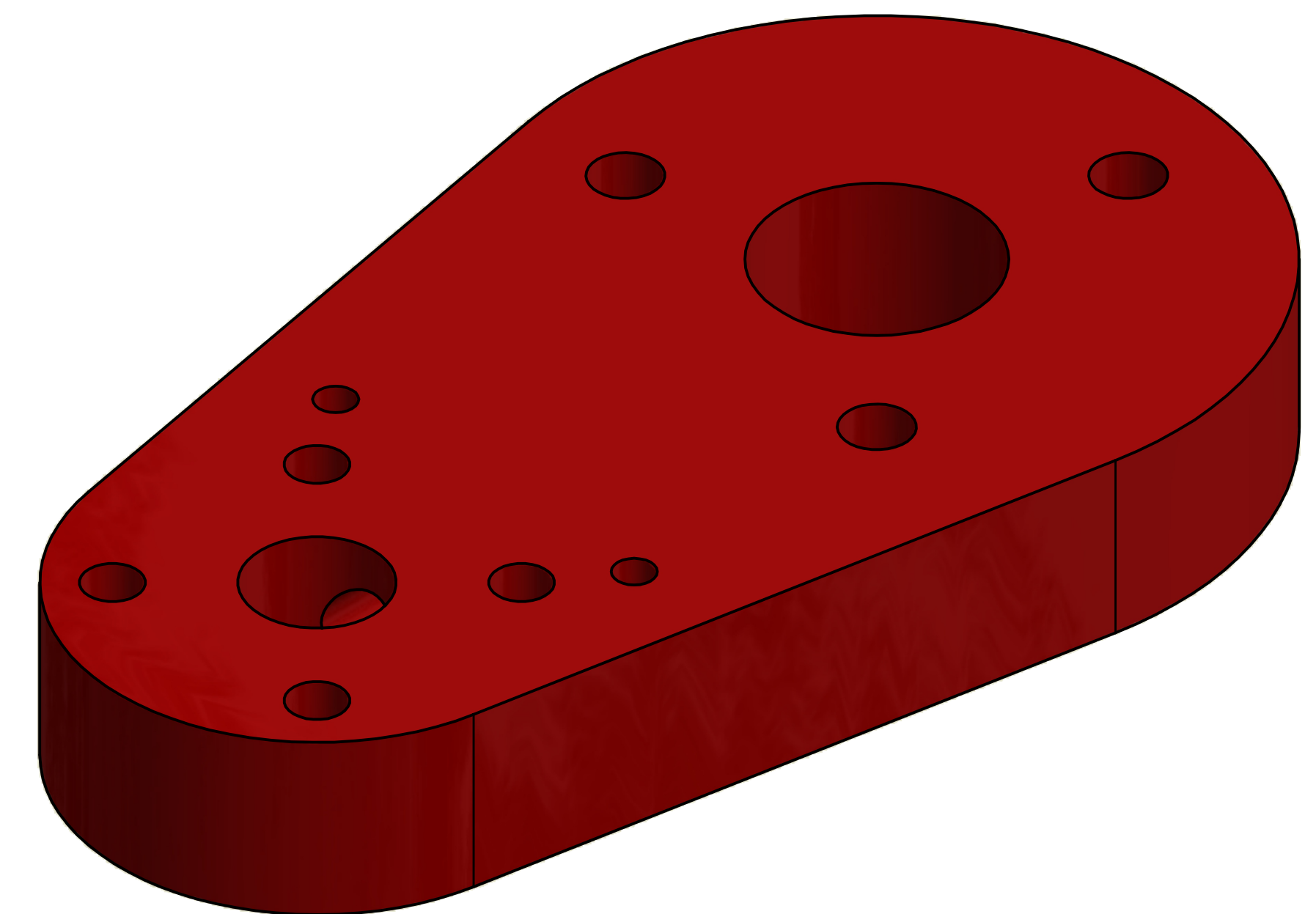
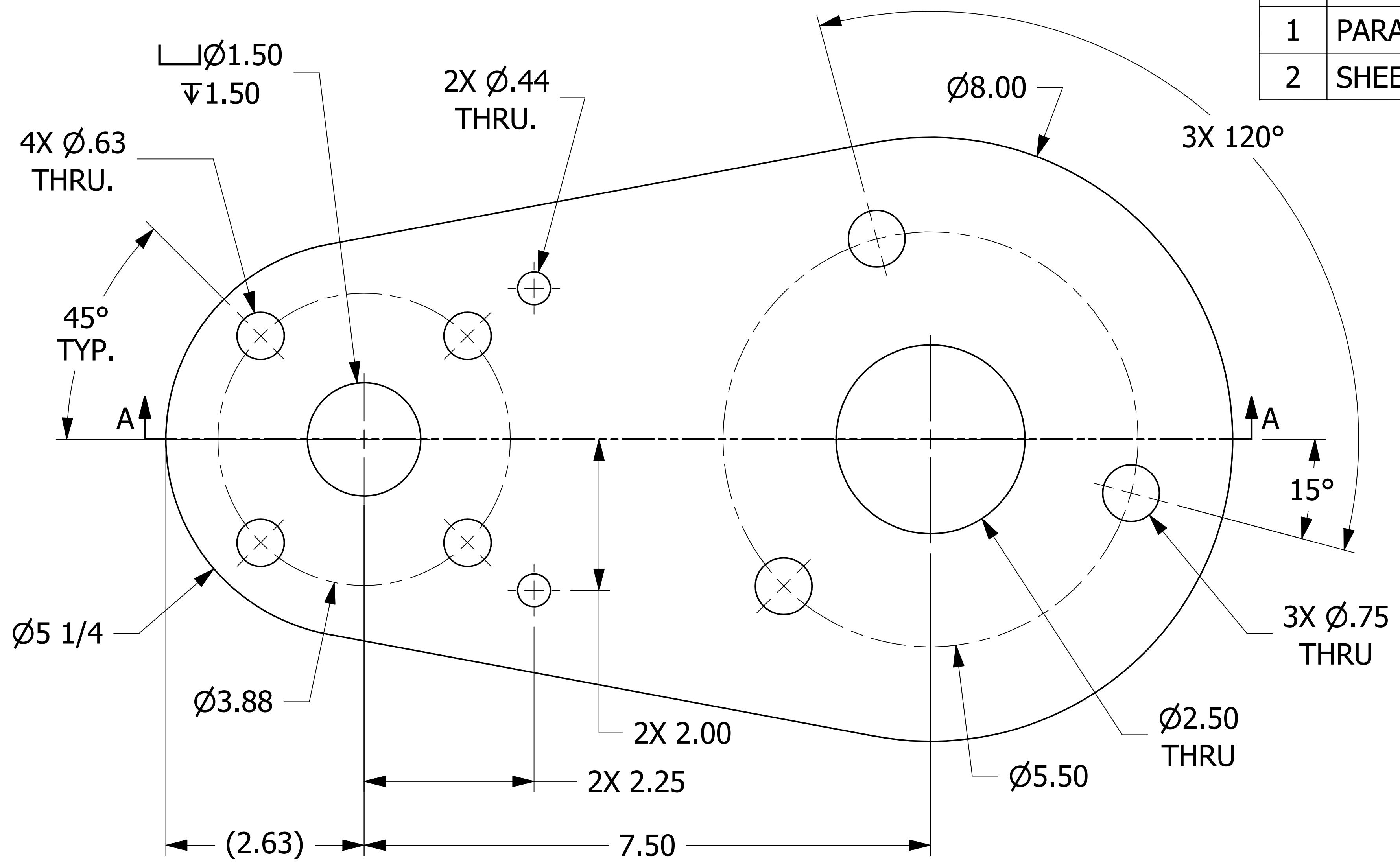
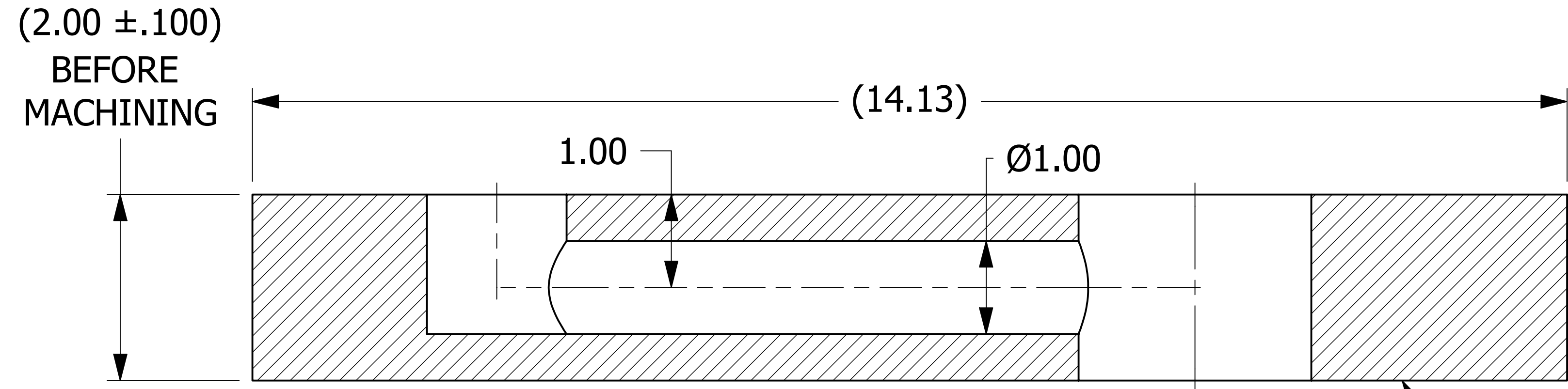


NO.	PART NAME	PART#	REQ'D	MATERIAL
1	PARALLEL INSTRUMENT TEE PLUG	HSPITPLG7	1	SALCO PE
2	SHEET 2"	SHT2UHR	.83 SQ FT	SALCO PE



ISOMETRIC VIEW
SCALE 3:4



SECTION A-A

MARK PER QAP5A-1
TEXT HEIGHT .1" MIN.

SEE NOTE 5
(3 PLACES)

- NOTES:
1. SEE DOCUMENT DSS 1 FOR MATERIAL SPECIFICATIONS.
 2. SEE DOCUMENT QAP5A-1 FOR MARKING PROCEDURE.
 3. SEE DOCUMENT DSS 3 FOR FRICTION WELDING SPECIFICATIONS.
 4. AAR APPROVAL #E-099017
 5. SEE DOCUMENT DSS 5 FOR SERRATED GASKET SPECIFICATIONS.

REV	BY	DATE	DESCRIPTION
G	WEB	6-11-14	ADDED ±.100 TOLERANCE, UPDATED NOTES
F	KHK	12-5-12	UPDATED BOM, DIMS
E	KHK	11-5-12	UPDATED TITLE BLOCK, NOTES, AND DIMS
D	REH	12-10-10	INCREASED FIXTURE HOLE DIAMETER TO .438
C	REH	7-19-10	CHANGED DIM FROM 6.13" TO 7.50"
B	REH	6-22-10	CHANGED DIM FROM 2.00" TO 2.25"
A	CHL	6-21-10	NEW PART ADDED TO SYSTEM

UNLESS OTHERWISE SPECIFIED DIMENSIONAL TOLERANCES FRACTIONAL: ±1/16 X.XX: ±.03 X.XXX: ±.015 ANGULAR: ±1° DEBURR ALL SHARP EDGES. ALL MACHINED SURFACES TO HAVE A 125 RMS FINISH UNLESS NOTED OTHERWISE. THIRD ANGLE PROJECTION	DRAWN BY:	AJB
	CHECKED BY:	VD
	PROTOTYPE BY:	AJB
	PROTOTYPE DATE:	5/18/2010
	APPROVED FOR PRODUCTION BY:	VD
	PRODUCTION DATE:	6/21/2010

SALCO PRODUCTS, INC.

PART NAME: **PARALLEL INSTRUMENT TEE 2 1/2" X 1 1/2"**

MATERIAL: **SALCO PE**

PROJECT #: **WAG0832** SHEET #: **1 OF 1** SCALE: **1:1**

DRAWING #: **D28764** PART #: **HSPIT212QX15**