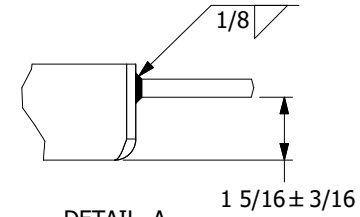
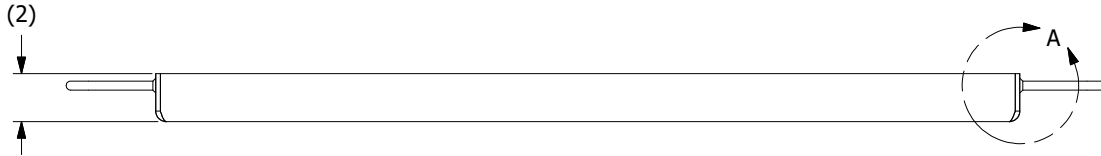
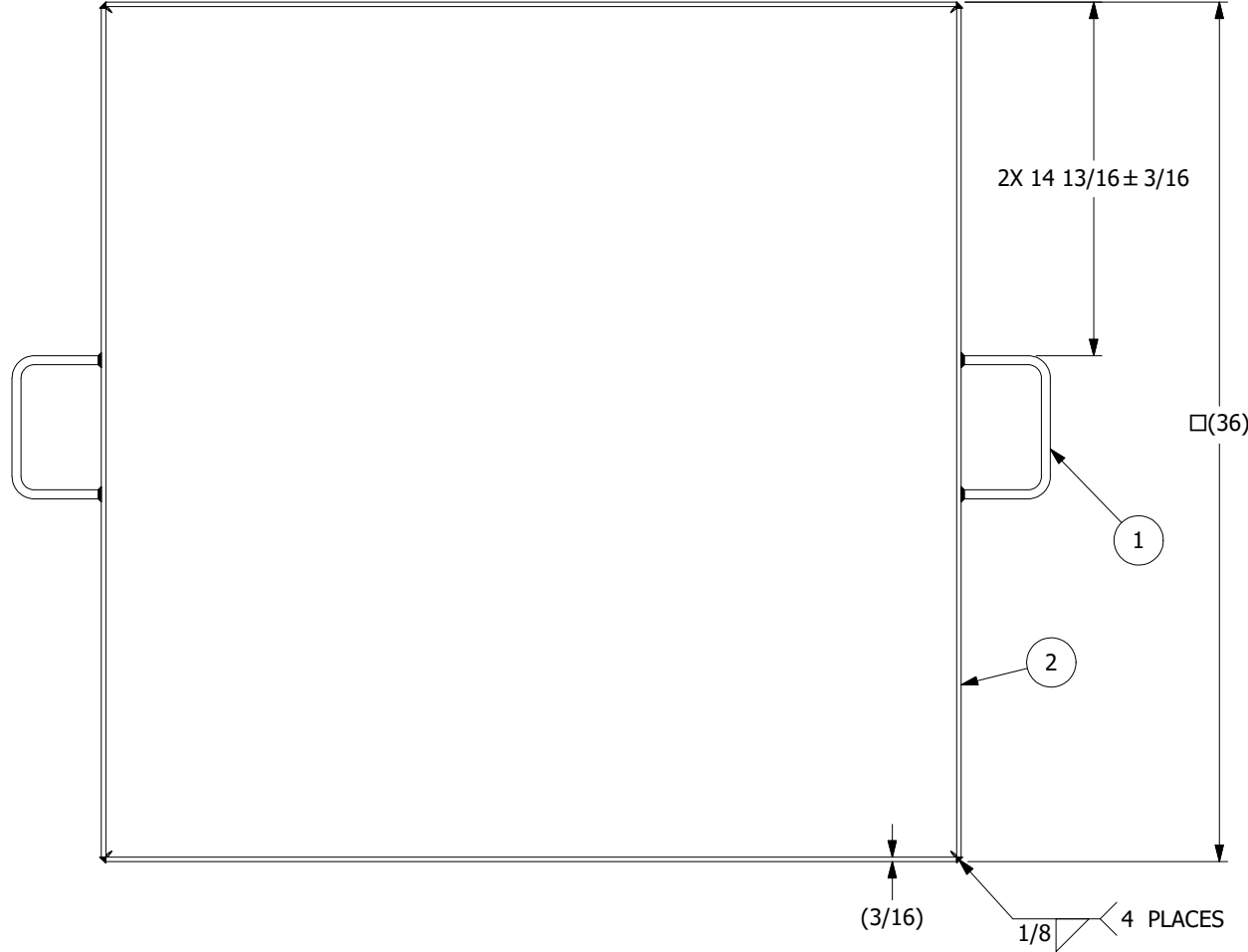


NO.	PART NAME	PART#	REQ'D	MATERIAL
1	HANDLE 3/8"	A53183	2	ASTM B221 6063 T6 ALUMINUM
2	ALUMINUM CATCH PAN	E53116	1	5052 - H32 ALUMINUM



DETAIL A
SCALE 1 : 1



- NOTES:
- SEE DOCUMENTS WPS-T01, WPS-P01, AND WPS-M08 FOR WELDING SPECIFICATIONS
 - WELD ACCEPTANCE CRITERIA TO MEET DOCUMENT D-005

UNLESS OTHERWISE SPECIFIED DIMENSIONAL TOLERANCES	DRAWN BY:	BP
FRACTIONAL: ±1/16	CHECKED BY:	EF
X.XX: ±.03	PROTOTYPE DATE:	3/30/2023
X.XXX: ±.015	APPROVED FOR PRODUCTION BY:	VD
ANGULAR: ±1°	PRODUCTION DATE:	6/13/2023
DEBURR ALL SHARP EDGES. ALL MACHINED SURFACES TO HAVE A 125 RMS FINISH UNLESS NOTED OTHERWISE.	SIZE:	E
THIRD ANGLE PROJECTION	DRAWING #:	53117

A	BP	6/13/23	RELEASED FOR PRODUCTION
REV	BY	DATE	DESCRIPTION
SALCO PRODUCTS, INC.			
ALUMINUM CATCH PAN ASSEMBLY			
SEE BOM			
PROJECT # R230322		SHEET #: 1 OF 1	SCALE: 1:2
DRAWING #: E53117			